

CNC CABINET DOOR PROFILE

Curated Elegance for Every Style

Where precision meets beauty — Corint Industries crafts custom cabinetry profiles designed to elevate any space. CNC-milled from locally sourced materials, built to last, and tailored to your vision.

Your style. Perfected in every detail.



SHAKER S001

Timeless, Simple, Esteemed. This classic mainstay is the mother of all profiles for a reason - it's versatility lends itself to any style across the spectrum. From the most contemporary of spaces to historical restorations, Shaker profiles add elegance that transcends geography, time and style.



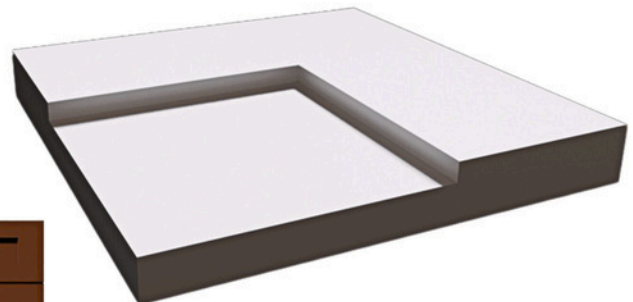
Inset Face Frame



1/2 Overlay



Frameless



PROFILE NOTES

- Panel Recess: .25"
- Stile/Rail Flat Width: 2"-3" (Standard 2.50")
- Reduced Rail Flat Width: 1.75"
- Thickness: .75" - 1" (Standard .75")



CORINTCNC

BEVEL SHAKER S002

Elegant, Simple, Clean. The Bevel Shaker is a versatile profile that is guaranteed to stand the test of time across traditional and modern projects alike. The bevel detail adds a dimensional quality while the simplicity of the profile creates simple, crisp edges.



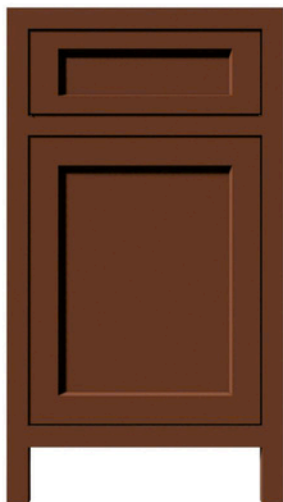
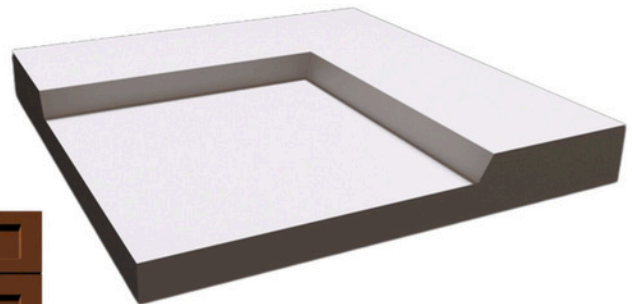
Inset Face Frame



1/2 Overlay

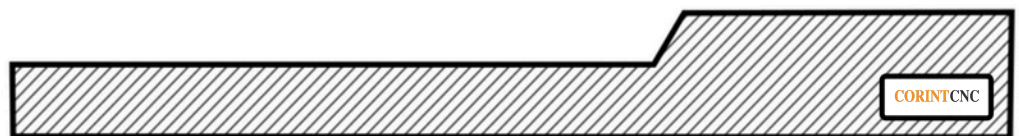


Frameless



PROFILE NOTES

- Panel Recess: .25" - .313" (Standard .25")
- Stile/Rail Flat Width: 2.25" - 3.00" (Standard 2.375")
- Reduced Rail Flat Width: 1.625"
- Thickness: .75" - 1" (Standard .75")



DOUBLE SHAKER S003

Simple, Sophisticated, Transitional. The Double Shaker offers a more detailed counterpart to a traditional Shaker profile. The added step detail adds an element of dimension while maintaining an elegant transitional feel.



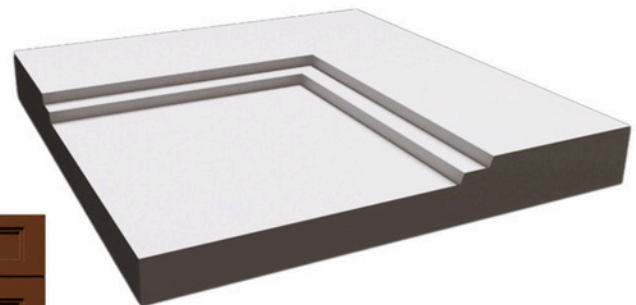
Inset Face Frame



1/2 Overlay



Frameless



PROFILE NOTES

- Panel Recess: .25"
- Stile/Rail Flat Width: 2.375"
- Reduced Rail Flat Width: .1313"
- Thickness: .75" - 1" (Standard .75")



CORINTCNC

SLIM SHAKER S004

Transitional, Simple, Polished. Slim Shaker is designed to encapsulate all of the ubiquity of a traditional shaker profile but with an added edge of sleekness. The shallow panel recess and smaller shoulder creates an even more refined response to the most famous profile of all time.



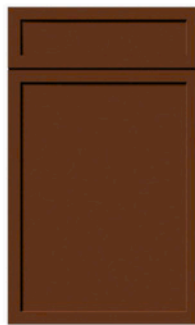
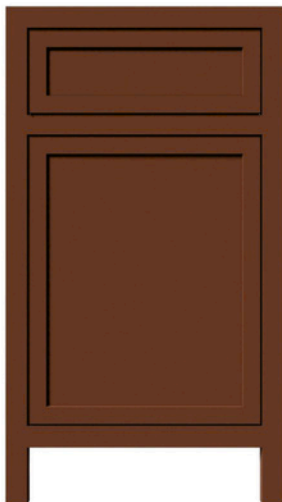
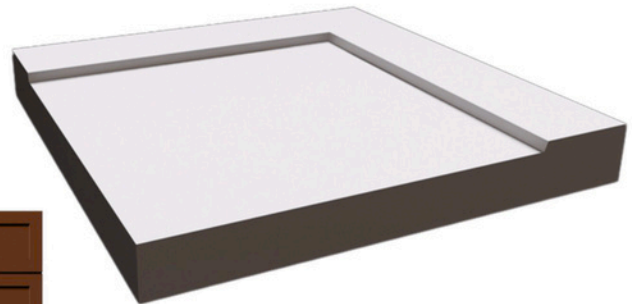
Inset Face Frame



1/2 Overlay



Frameless



PROFILE NOTES

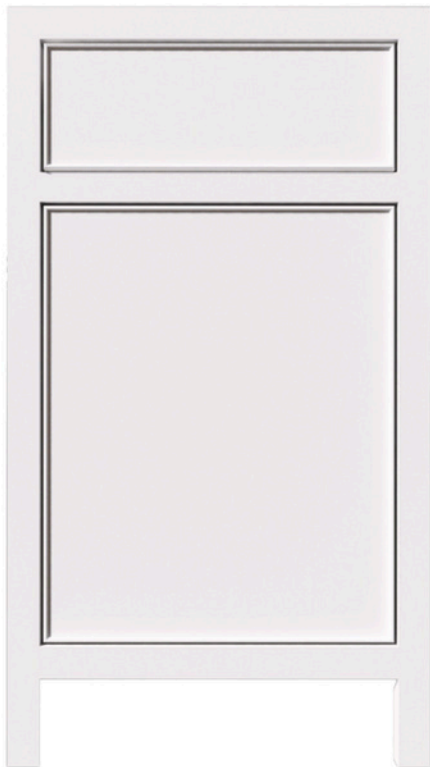
- Panel Recess: .125"
- Stile/Rail Flat Width: 1"
- Reduced Rail Flat Width: N/A
- Thickness: .75" - 1" (Standard .75")



CORINTCNC

SKINNY BEAD 125 S006

Contemporary, Minimal, Clean. This modern classic is designed to keep a low profile, with one simple but gorgeous addition - a single, subtle bead. Skinny Bead is the ultimate modern counterpart to any space. It's clean, versatile and elegant, but with a soft and beautiful edge.



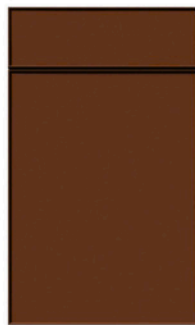
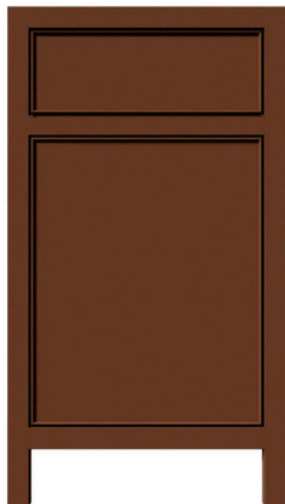
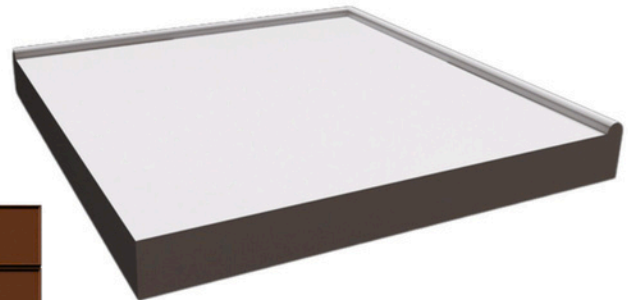
Inset Face Frame



1/2 Overlay

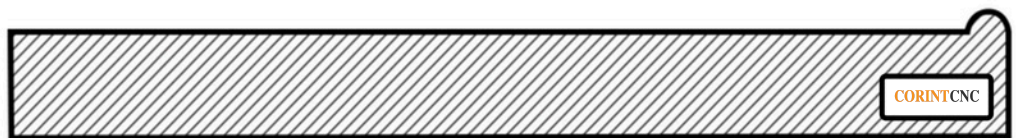


Frameless



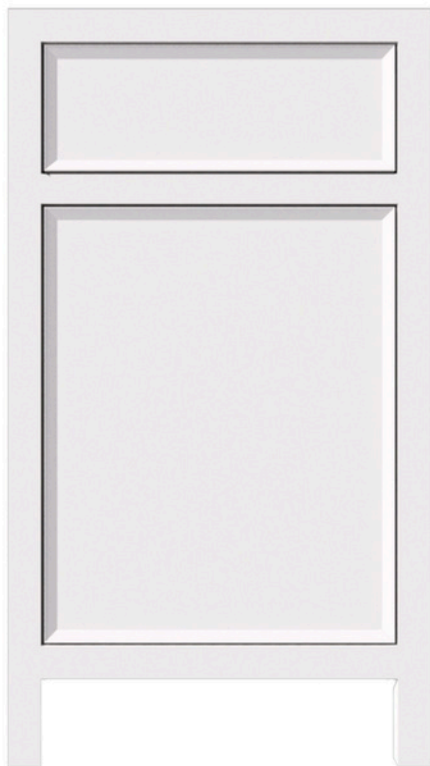
PROFILE NOTES

- Panel Recess: .125"
- Stile/Rail Flat Width: N/A
- Reduced Rail Flat Width: N/A
- Thickness: .75" - 1" (Standard 1")



SLIM 150V S005

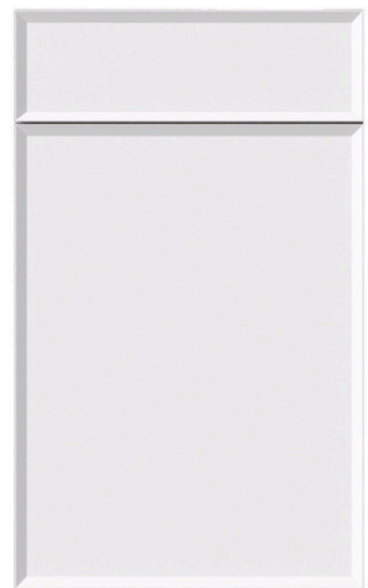
Minimal, Sleek, Modern. The subtle perimeter bevel of the Slim 150V creates a smooth, seamless transition across full cabinetry runs. This understated design introduces a gentle shift in the room's aesthetic, adding a refined yet impactful touch that elevates the overall vibe.



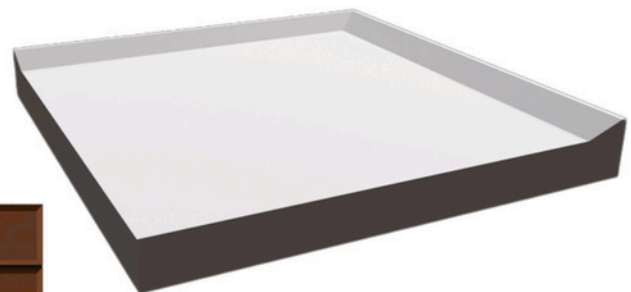
Inset Face Frame



1/2 Overlay

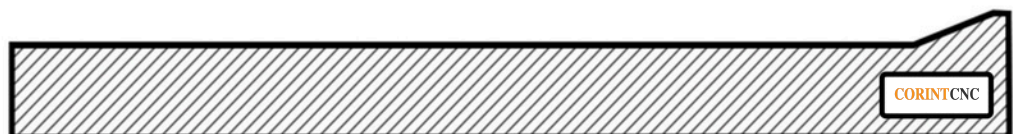


Frameless



PROFILE NOTES

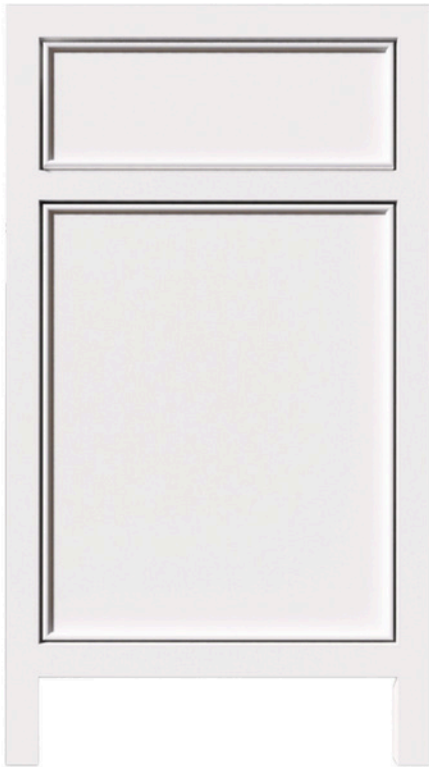
- Panel Recess: .1875"
- Stile/Rail Flat Width: .093"
- Reduced Rail Flat Width: N/A
- Thickness: .75" - 1" (Standard 1")



CORINTCNC

SKINNY BEAD 187 S007

Contemporary, Minimal, Clean. This modern classic is designed to keep a low profile, with one simple but gorgeous addition - a single, subtle bead. Skinny Bead is the ultimate modern counterpart to any space. It's clean, versatile and elegant, but with a soft and beautiful edge.



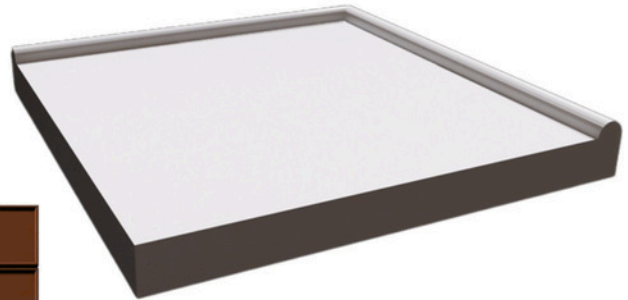
Inset Face Frame



1/2 Overlay

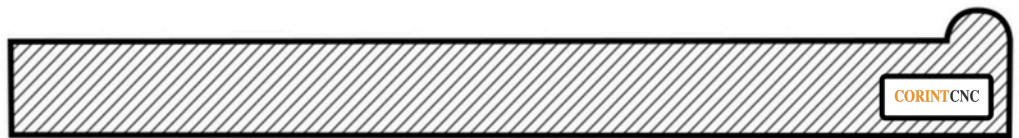


Frameless



PROFILE NOTES

- Panel Recess: .1875"
- Stile/Rail Flat Width: N/A
- Reduced Rail Flat Width: N/A
- Thickness: .75" - 1" (Standard 1")



INSIDE BEAD S008

Clean, Simple, Refined. This contemporary take on a classic bead-and-shoulder profile combines the timelessness of both shaker and classic beaded profiles with the notable addition of a fresh, clean line to emphasize its modernity making it an instant classic.



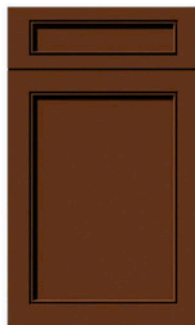
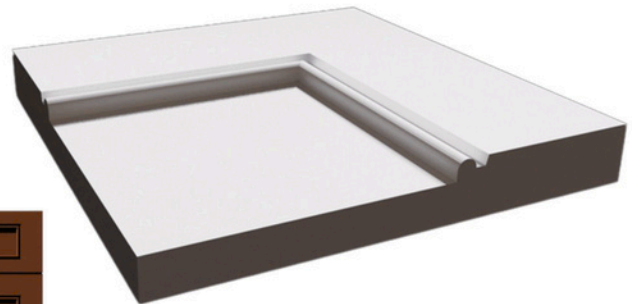
Inset Face Frame



1/2 Overlay

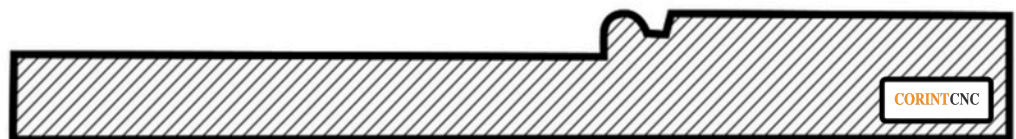


Frameless



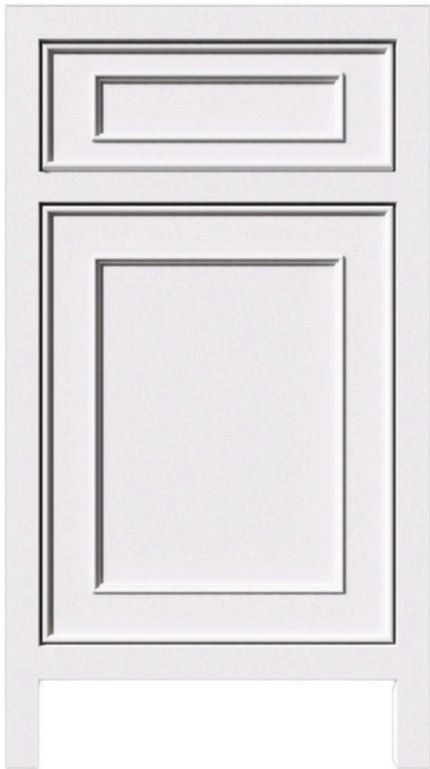
PROFILE NOTES

- Panel Recess: .25"
- Stile/Rail Flat Width: 2.25"
- Reduced Rail Flat Width: 1.375"
- Thickness: .75" - 1" (Standard .75")



FRESNO S031

Elegant, Polished, Refined. Inspired by historical beading motifs, Fresno's rounded and bevel details give this profile a traditional appeal that strikes that rare medium between historical and modern - making it a flexible choice that can be toned to suit any space.



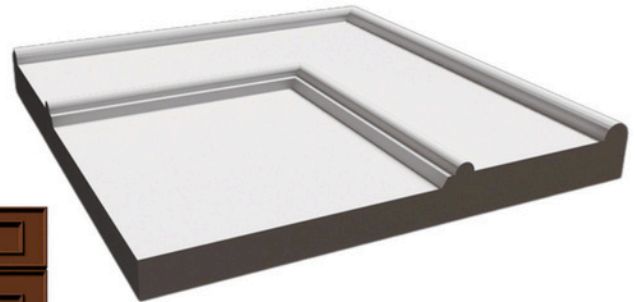
Inset Face Frame



1/2 Overlay

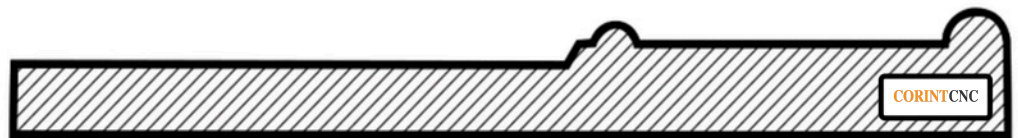


Frameless



PROFILE NOTES

- Panel Recess: .313"
- Stile/Rail Flat Width: 1.9"
- Reduced Rail Flat Width: .1"
- Thickness: .75" - 1" (Standard 1")



CORINTCNC

LIMA S032

Luxe, Intricate, Sophisticated. This extraordinarily detailed profile brings a luxurious high-end feel to a historical bead motif making it both transitional and traditional. In either case, Lima adds character and rich detail to any space with versatility that will persist through time.



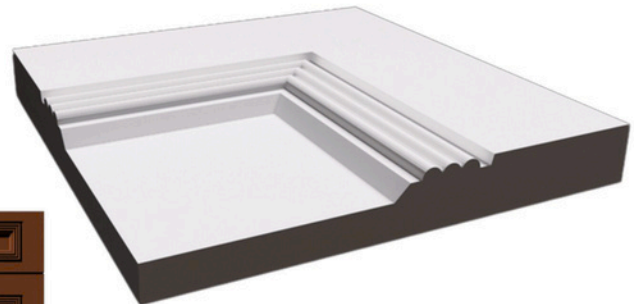
Inset Face Frame



1/2 Overlay



Frameless



PROFILE NOTES

- Panel Recess: .313"
- Stile/Rail Flat Width: 2"
- Reduced Rail Flat Width: .875"
- Thickness: .75" - 1" (Standard .75")



CORINTCNC

TACOMA S033

Transitional, Fresh, and Distinctive. Featuring sleek, shallow steps paired with a classic bead detail, this modern interpretation of a step bead profile delivers a contemporary twist on timeless traditional design elements.



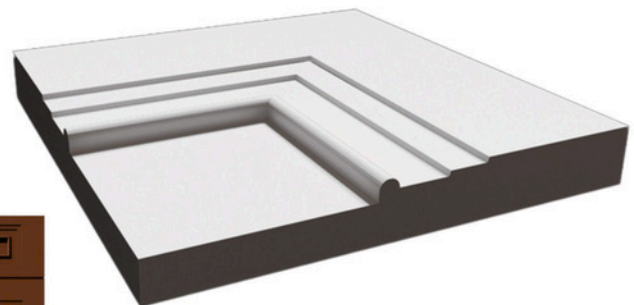
Inset Face Frame



1/2 Overlay

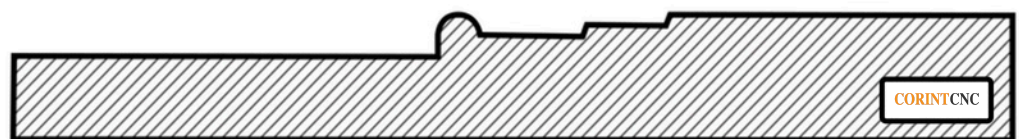


Frameless



PROFILE NOTES

- Panel Recess: Standard 1/4"
- Stile/Rail Flat Width: 2"
- Reduced Rail Flat Width: .875"
- Thickness: 3/4" - 1" (Standard 3/4")



DENVER S034

Transitional, Crisp, Polished. Denver strikes a perfect balance between modern and traditional, bringing just the right amount of detail while keeping it clean and sophisticated. This flexible profile can fit in just about anywhere.



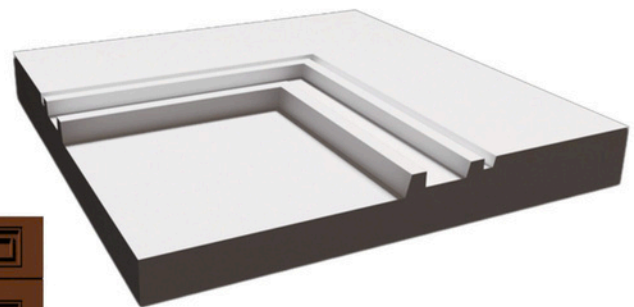
Inset Face Frame



1/2 Overlay



Frameless



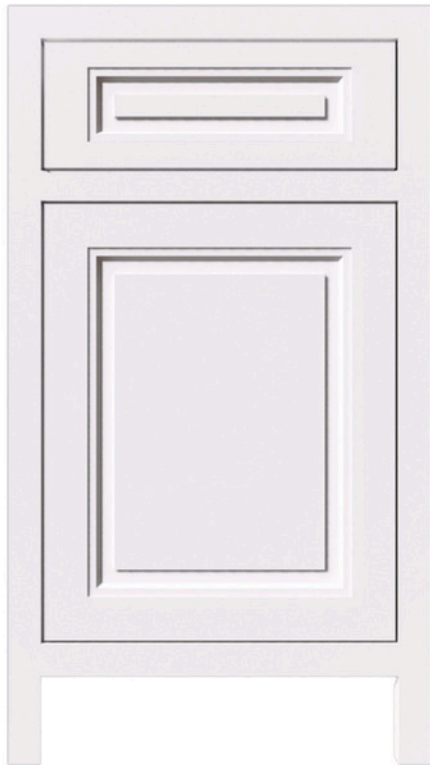
PROFILE NOTES

- Panel Recess: .25"
- Stile/Rail Flat Width: 2.2"
- Reduced Rail Flat Width: .813"
- Thickness: .75" - 1" (Standard .75")



AUBURN S035

Clean, Modern, Polished. This profile brings a contemporary twist to a traditional raised panel, adding dimension and depth with its bevel detail and refined flats. Auburn is designed to give subtle modern details to a familiar raised panel motif.



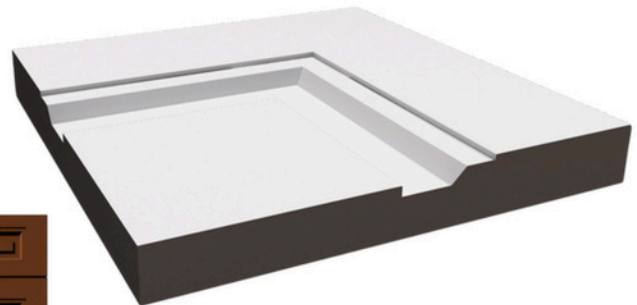
Inset Face Frame



1/2 Overlay

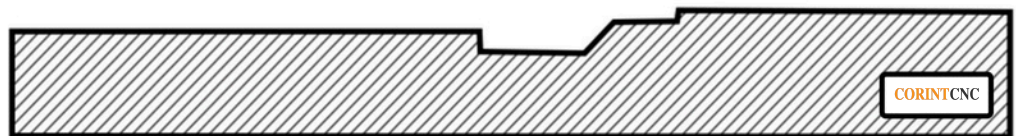


Frameless



PROFILE NOTES

- Panel Recess: .25"
- Stile/Rail Flat Width: 2" - 2.25" (Standard 2.50")
- Reduced Rail Flat Width: 1.125"
- Thickness: .75" - 1" (Standard .75")



CORINTCNC

FUJI S036

Transitional, Sleek, Distinctive. With its gorgeous, long bevel and defining bead detail this profile is both simple and stately. Fuji brings a unique combination of fresh and time-honored detailing making it a versatile choice.



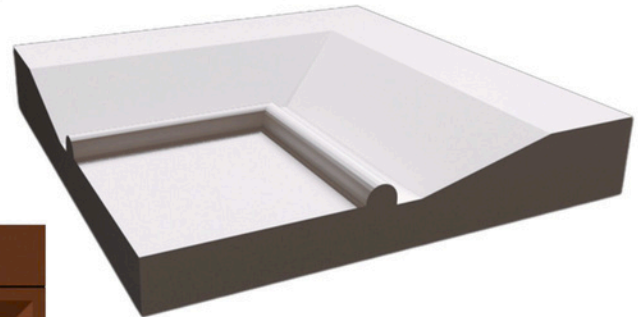
Inset Face Frame



1/2 Overlay



Frameless



PROFILE NOTES

- Panel Recess: .375"
- Stile/Rail Flat Width: 1 - 2.25" (1.25" Standard)
- Reduced Rail Flat Width: Slab Recommended
- Thickness: 1"



CORINTCNC

RACINE S061

Intricate, High-End, Traditional. This stunningly detailed profile is designed to enhance more traditional projects with its sweeping bead and cove details - only there's a twist. Each step in the profile creates another layer of crisp line to further amplify its timeless grandeur.



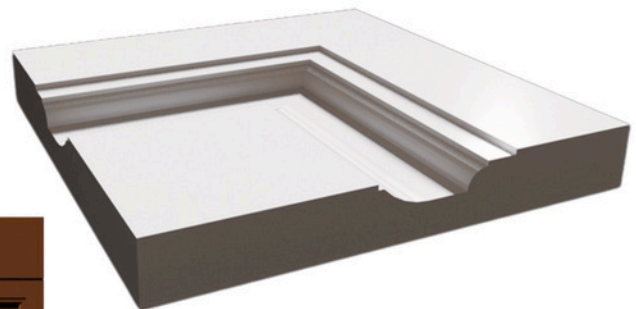
Inset Face Frame



1/2 Overlay

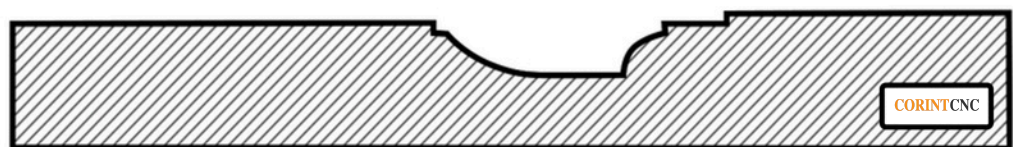


Frameless



PROFILE NOTES

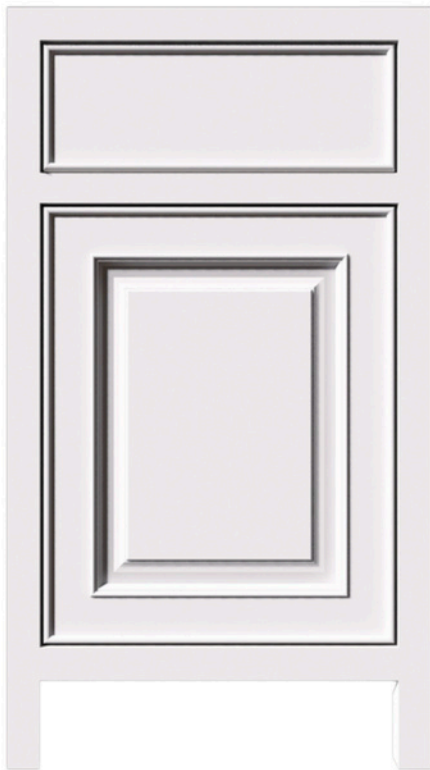
- Raised Panel
- Stile/Rail Flat Width: 2"
- Reduced Rail Flat Width: Slab Recommended
- Thickness: .75" - 1" (Standard .75")



CORINTCNC

BRISTOL S062

Luxurious, Detailed, Traditional. Bristol is a classic raised panel profile using a salient bead motif. It's gorgeous rounded details add a richness and depth that lends itself to a more intricate and lavish style.



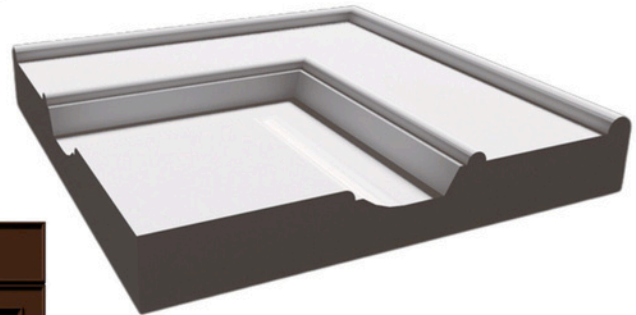
Inset Face Frame



1/2 Overlay

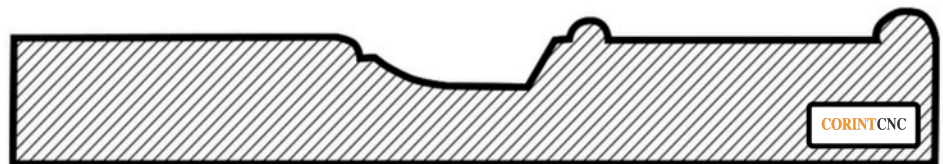


Frameless



PROFILE NOTES

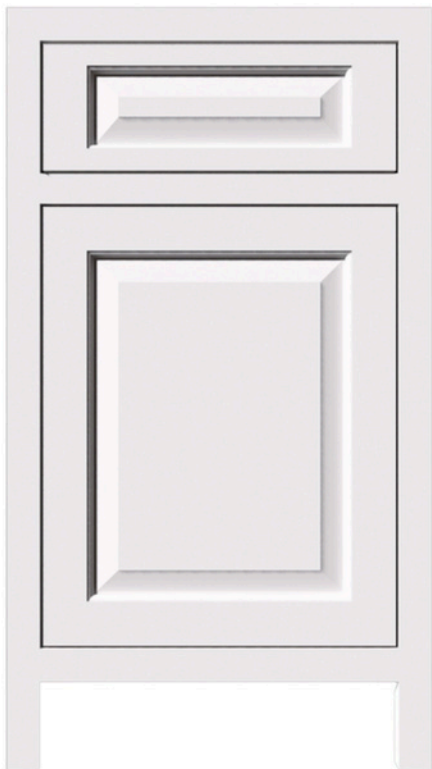
- Raised Panel
- Stile/Rail Flat Width: 1.75"
- Reduced Rail Flat Width: 1"
- Thickness: .875" - 1" (Standard 1")



CORINTCNC

MADISON S063

Clean, Classic, Polished. Inspired by colonial detailing, Madison adds historical charm with its distinctive beveled raised panel while also bringing just the right amount of added elegance and detail with its bead and shoulder combo.



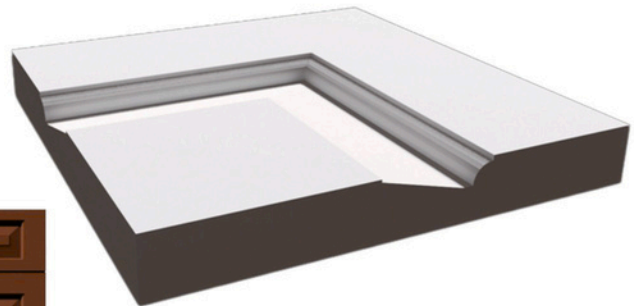
Inset Face Frame



1/2 Overlay

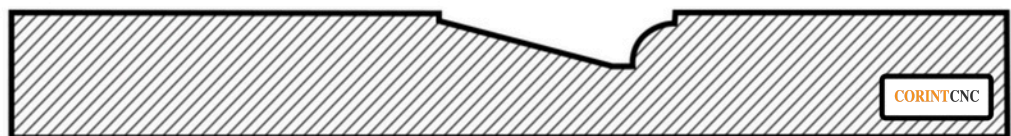


Frameless



PROFILE NOTES

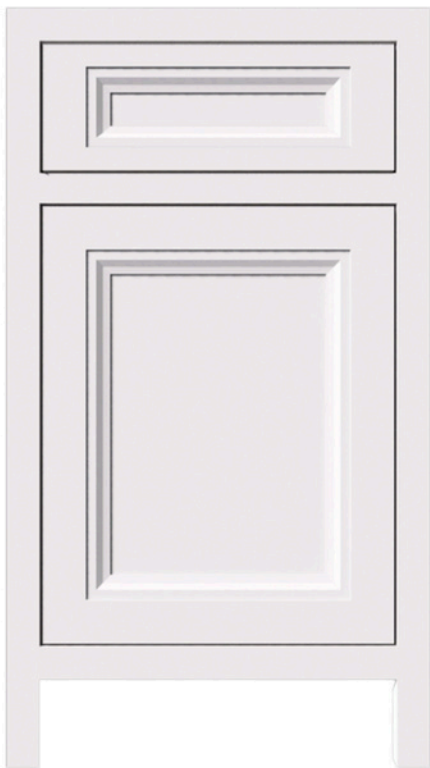
- Raised Panel
- Stile/Rail Flat Width: 2"
- Reduced Rail Flat Width: 1.03"
- Thickness: .75" - 1" (Standard .75")



CORINTCNC

FRANKLIN S081

Elegant, Dynamic, Luxe. With it's long scooped detail and clean-cut steps, Franklin adds richness and depth to any space while remaining un-fussy and relatively modern. Regardless of your project's aesthetic persuasion, Franklin adds an element of sophistication and polish.



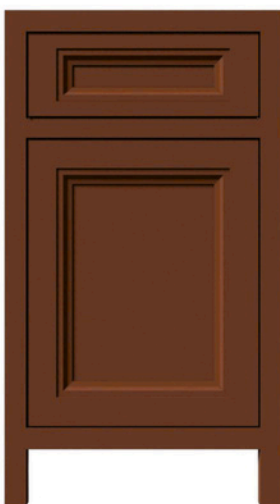
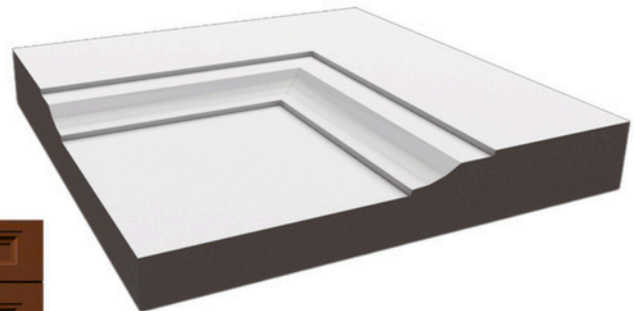
Inset Face Frame



1/2 Overlay

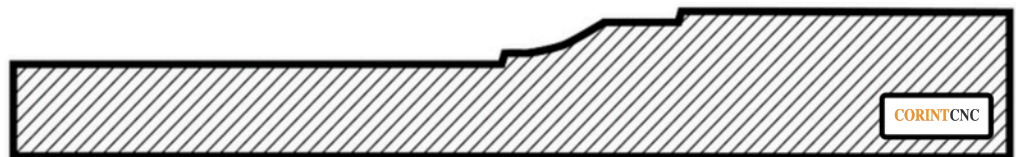


Frameless



PROFILE NOTES

- Panel Recess: .313"
- Stile/Rail Flat Width: 2.125"
- Reduced Rail Flat Width: .106"
- Thickness: .75" - 1" (Standard .75")



CORINTCNC

STEP BEAD S009

Classic, Traditional, Polished. This storied profile exudes a certain mastery over elegant simplicity. The unbeatable combination of a single crisp line with a soft interior bead creates a delicate balance that adds subtle sophistication and undeniable class to any space.



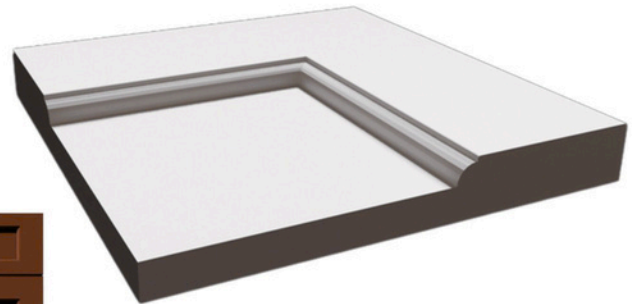
Inset Face Frame



1/2 Overlay



Frameless



PROFILE NOTES

- Panel Recess: .313"
- Stile/Rail Flat Width: 2.25"
- Reduced Rail Flat Width: 1.5"
- Thickness: .75" - 1" (Standard .75")



STEP BEAD RP S010

Refined, Classic, Luxe. This Raised Panel version of a step bead profile adds a boost of elegance and substance to an already storied profile. Step Bead RP is designed to infuse traditionally styled interiors with timelessness and luxury.



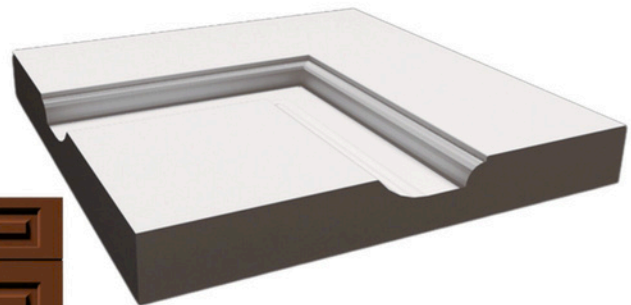
Face Frame



1/2 Overlay

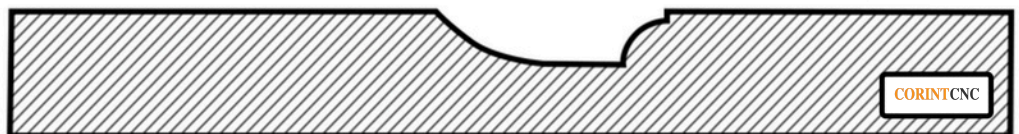


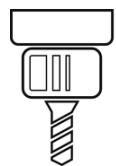
Frameless



PROFILE NOTES

- Raised Panel
- Stile/Rail Flat Width: 2.25"
- Reduced Rail Flat Width: 1.2"
- Thickness: .75" - 1" (Standard .75")





CORINT CNC

WOODWORKING & PANELS

Corint CNC Woodworking & Panels

6090 45th St N, St. Petersburg, FL 33714

Phone: 727 565 2497

Email : sales@cnc-panels.com